



KILAUEA NEIGHBORHOOD ASSOCIATION

Lyle Tabata, Acting County Engineer
Public Works Department
4444 Rice Street, Suite 275
Lihue, HI 96766

August 16, 2016

President:
Yoshito L'Hote

Vice President:
Ron Paul

Secretary:
Thomas Pickett

Treasurer:
Gary Pacheco

Sergeant-at-arms
Scott Mijares

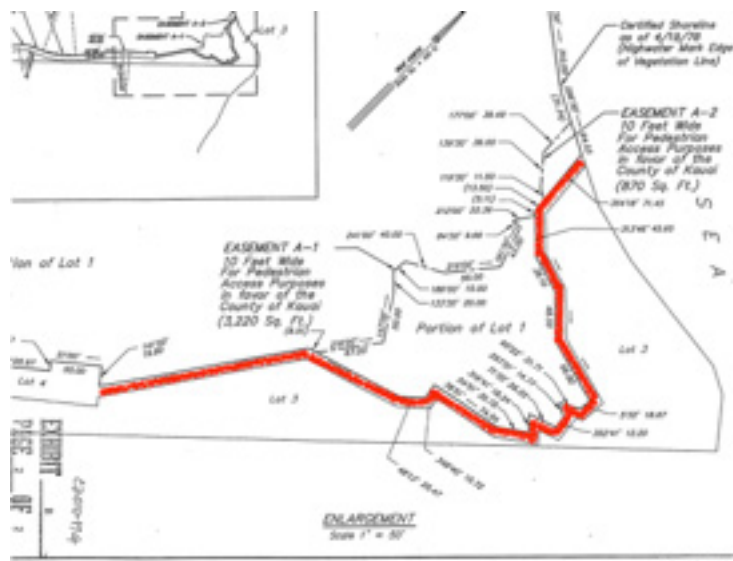
PTSA Rep.
Lori Patch

Directors:
Mike Latif
Beryl Blaich
Bill Troutman
Tim Kallai
Ken Carlson
Charlie Martin
Carrie Souza
Alvin Castelo
Ginny Shinn

808-241-4992
Re: County Right of Way at Lepeuli, Kauai
Lot 4, LCA 1161
TMK (4) 5-1-003:021

Aloha e Mr. Tabata:

The Kilauea Neighborhood Association is interested in assisting the County of Kauai with maintenance of the county-owned Right-of-Way which accesses the beach at Lepeuli, Kauai (also known as Larsen's Beach), shown in red below.



July 6, 2010, the KNA wrote the County Council about the importance of access at Lepeuli:

The Kilauea Neighborhood Association has a proud and long standing history of holding the space where the community can dialogue on important issues and actions that impact us, including access to our special places.

Post Office Box 328, Kilauea, Kauai, Hawaii 96754
<http://kna-kauai.org> . Email: joekilauea@gmail.com
<http://facebook.com/kna.kauai>

In June, 2014, the County discussed the Lepeuli Right of Way and easement with the KNA, and presented a

Maintenance Plan

- Maintenance of vegetation along both the access lot and access easement
- Maintenance will consist of vertical clipping and weed whacking to clear trails
- The County intends to work with the State of Hawai'i Department of Public Safety (Work Release Program)
- Department of Public Works will coordinate the trail maintenance

The KNA would like to continue to dialogue with the County of Kauai about the importance of maintaining safe access to our beaches.

Please contact Tim Kallai (828-6367) or Yosh L'Hote (937-8646) so we can malama this trail.

Mahalo,

Yoshi L'Hote, President